

Genogram

Case Name: _____
Date: _____

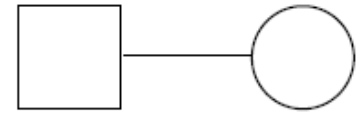
Family Engagement Guide for Discussion:

As part of the assessment process, we would like to get to know you and your family better.

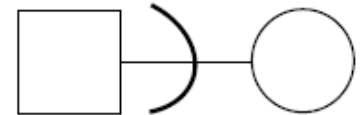
1. What are your family strengths?
2. Who currently lives in your household?
3. What relatives or others are seen as available for support or assistance? (resource for childcare, financial assistance, shelter, temporary placement resource, etc.)
4. What types of activities do you enjoy doing together as a family?
5. Does your family actively participate in religious practices/services?
6. Do you follow any traditions in your family (type of dress, customs, religious practices, holidays)?
7. What are the overall parenting practices in the family?
8. Who is the decision-maker in parenting practices in your household?
9. What rules are children in the home expected to follow? (parent expectations and knowledge and skill in parenting and child development)
10. What would happen in your household if a family member was not following the rules or expectations? (Disciplinary methods, concept and purpose of discipline, and cultural practices)
11. What are the expectations for education and school performance?
12. Does your family go to the doctor regularly (when sick, immunize children, checkups etc.) or do they believe in other means for cures?

Emotional Relationship Lines:

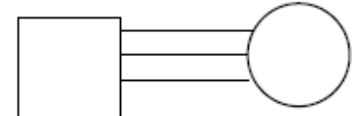
Strong relationship



Cut off



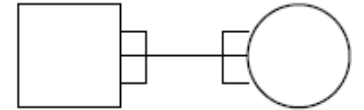
Intense relationship



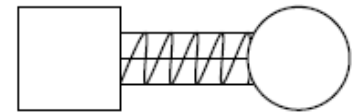
Conflictual relationship



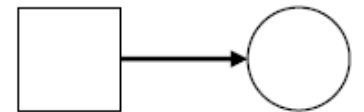
Distance relationship



Intense conflictual relationship



Strong relationship
With energy arrow



Strong relationship
both directions

