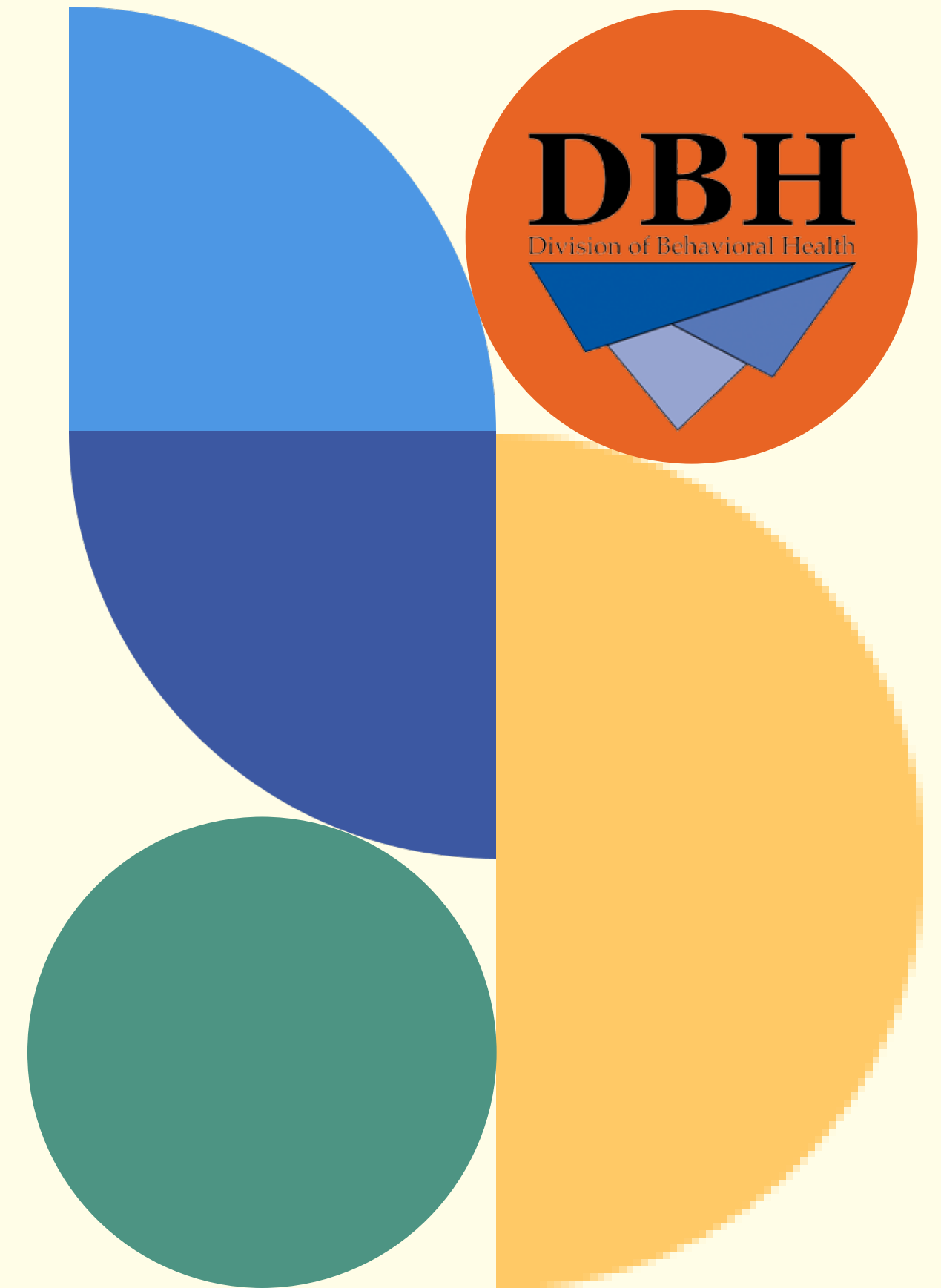


# Behavioral Health

An introduction to the Division of Behavioral Health Services: Comprehensive Psychiatric Services (CPR) and Comprehensive Substance Treatment and Rehabilitation (CSTAR)

Jessica Bounds

Director of Community  
Treatment Programming



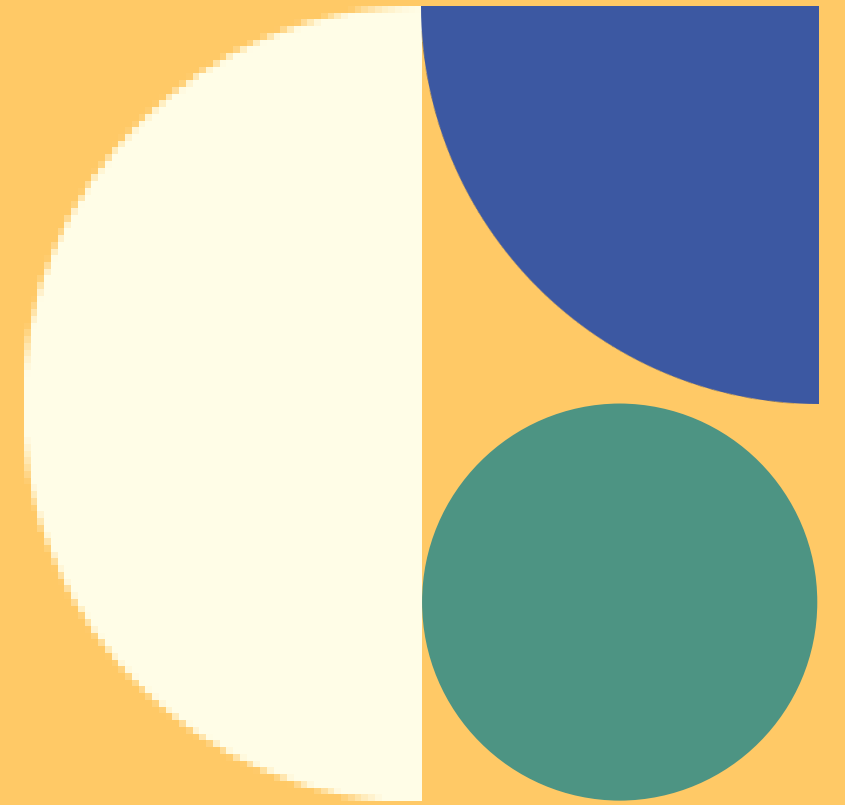
# What does "behavioral health" mean?

---

Mental Illness

---

Substance Use  
Disorder (SUD)



# What services are provided?

## CSTAR

A wide array of clinical treatment services including outpatient and specialty programming, withdrawal management and residential support services.

## CPR

Community-based treatment programming, delivering evidence-based, cost-effective behavioral health rehabilitative services.

# Where are services provided?

- Community Mental Health Centers (CMHCs)
- Substance Use Disorder (SUD) Providers
- Certified Community Behavioral Health Organizations (CCBHO)

# The CPR Program

- Person -centered approach that emphasizes individual choices and needs
- Uses existing community resources and natural support systems
- Promotes independence and the pursuit of meaningful living, working, learning, and leisure -time activities



# Who is eligible for services?

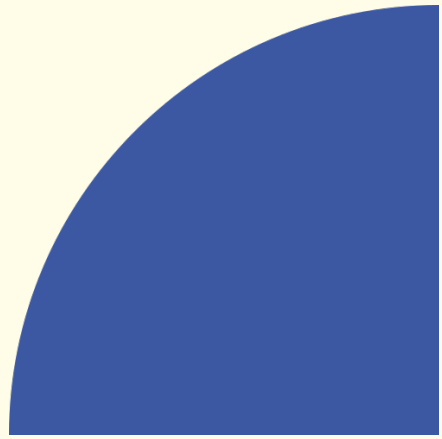
## CPR Program Eligibility

- Qualifying Diagnosis within the Diagnostic and Statistical Manual of Mental Disorders, Fifth Edition (DSM -5)
- Evidence of Impairment
- Duration

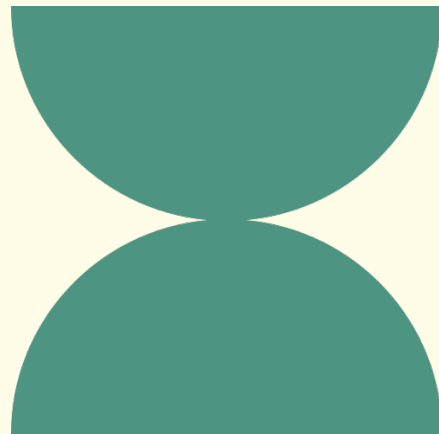


# CPR Services

Assessment  
and  
Treatment  
Planning



Community  
Support



Crisis  
Intervention



Medication  
Services



Group  
Education



Counseling  
Services



Evidence-Based  
Practices



# Who is eligible for services?

## CSTAR Eligibility

- Diagnosis
  - Substance Use Disorder as defined in the Diagnostic and Statistical Manual of Mental Disorders, Fifth Edition (DSM-5)





# CSTAR Services

Assessments  
and  
medication  
services

Individual,  
group, and  
family  
counseling

Education and  
Community  
Support

Peer and  
Family  
Support

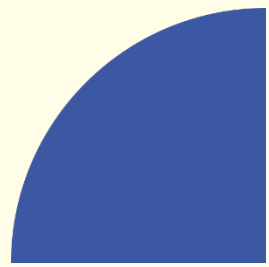
Families can  
participate in  
services

Specialized  
Treatment  
Settings



# CSTAR

## Transformation



Gold Standard



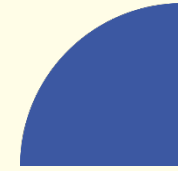
Reimbursement



ASAM Criteria

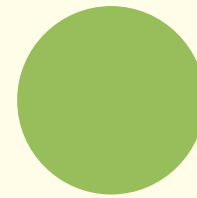


Standardization



Gold Standard

Treatment of substance use and co-occurring disorders.



ASAM Criteria

6 Dimensional Assessment



Reimbursement

“Team -based” reimbursement rates



Standardization

Objective decision -making

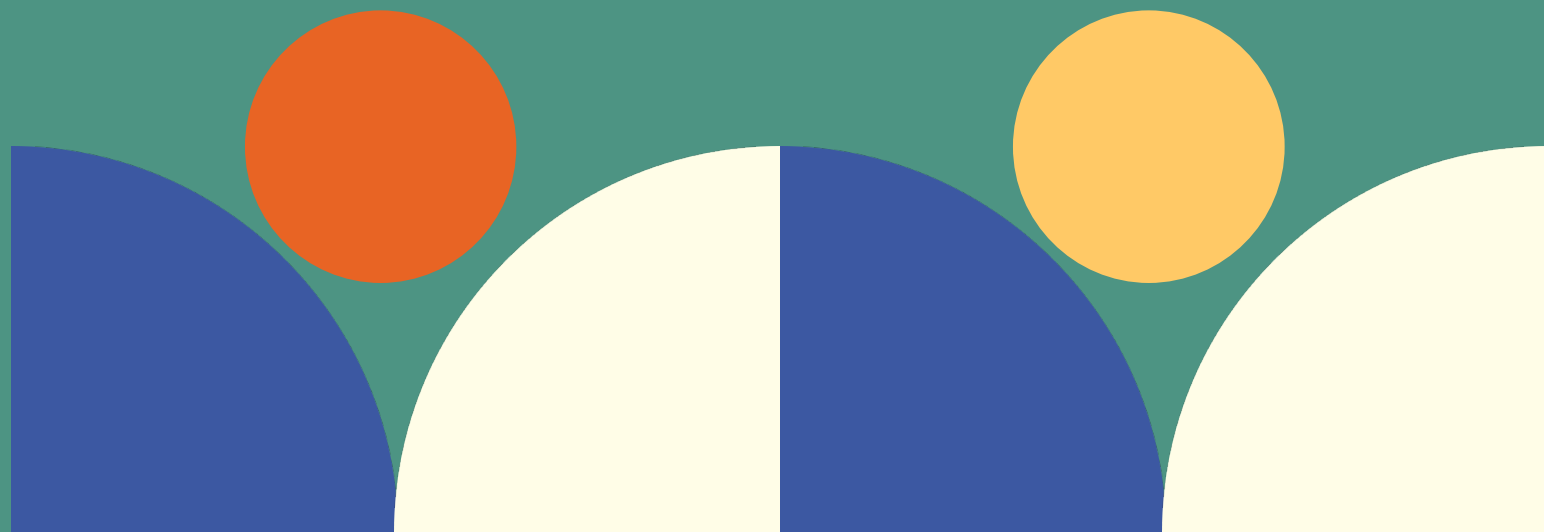
# Workforce

## Associates degree in Behavioral Health Support

- Improving preparedness for those filling the Community Support Specialist role
- Increase the available skilled workforce for community treatment providers for both mental health and substance use treatment
- 8 participating community colleges



MISSOURI DEPARTMENT OF MENTAL HEALTH  
**BEHAVIORAL HEALTH  
SUPPORT PROGRAM**





# Thank you!

[Jessica.Bounds@dmh.mo.gov](mailto:Jessica.Bounds@dmh.mo.gov)