



**keyway**  
center for  
diversion & reentry

Formerly The Center for Women in Transition

**St. Louis, MO**

# Mission:

To advocate for and assist women in the criminal justice system to support their successful transition to family and community.

# Who We Serve

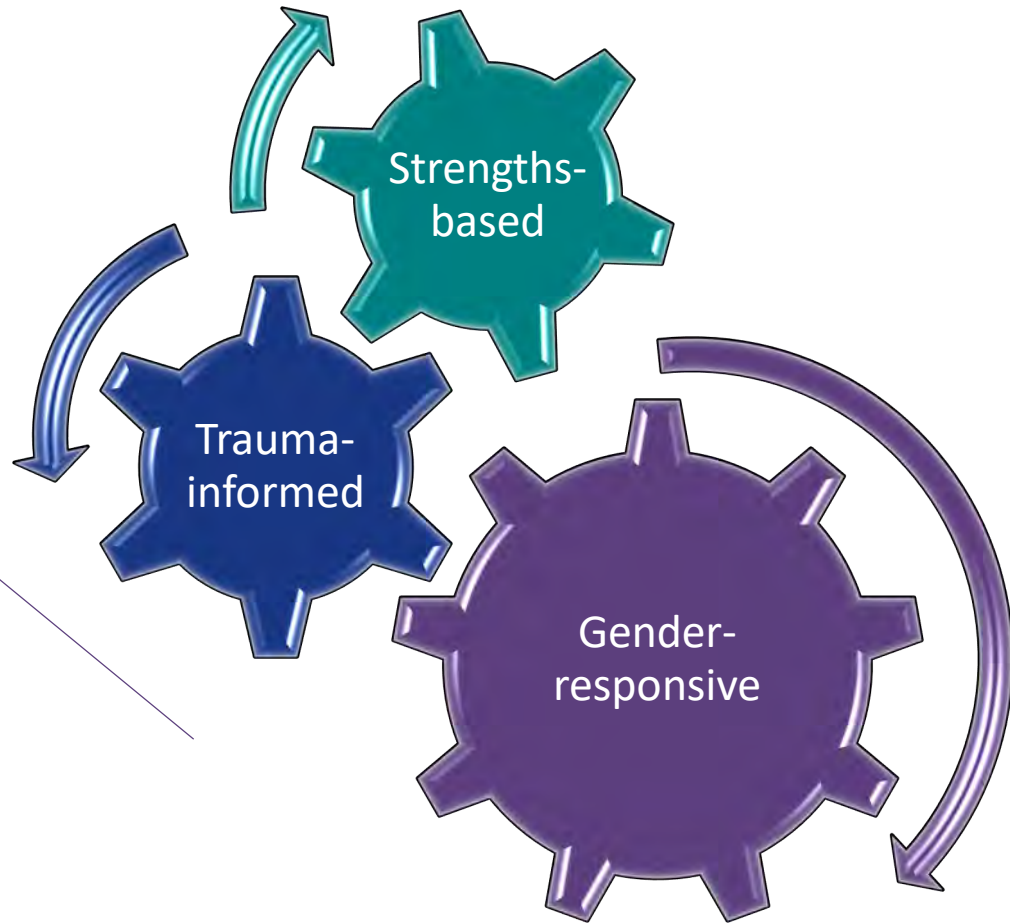
- Adult women and trans
- Justice-involved within the past 6 months\*
- *\*Sharon House--current involvement or past involvement with risk for reengagement in the system*

# Referral Sources

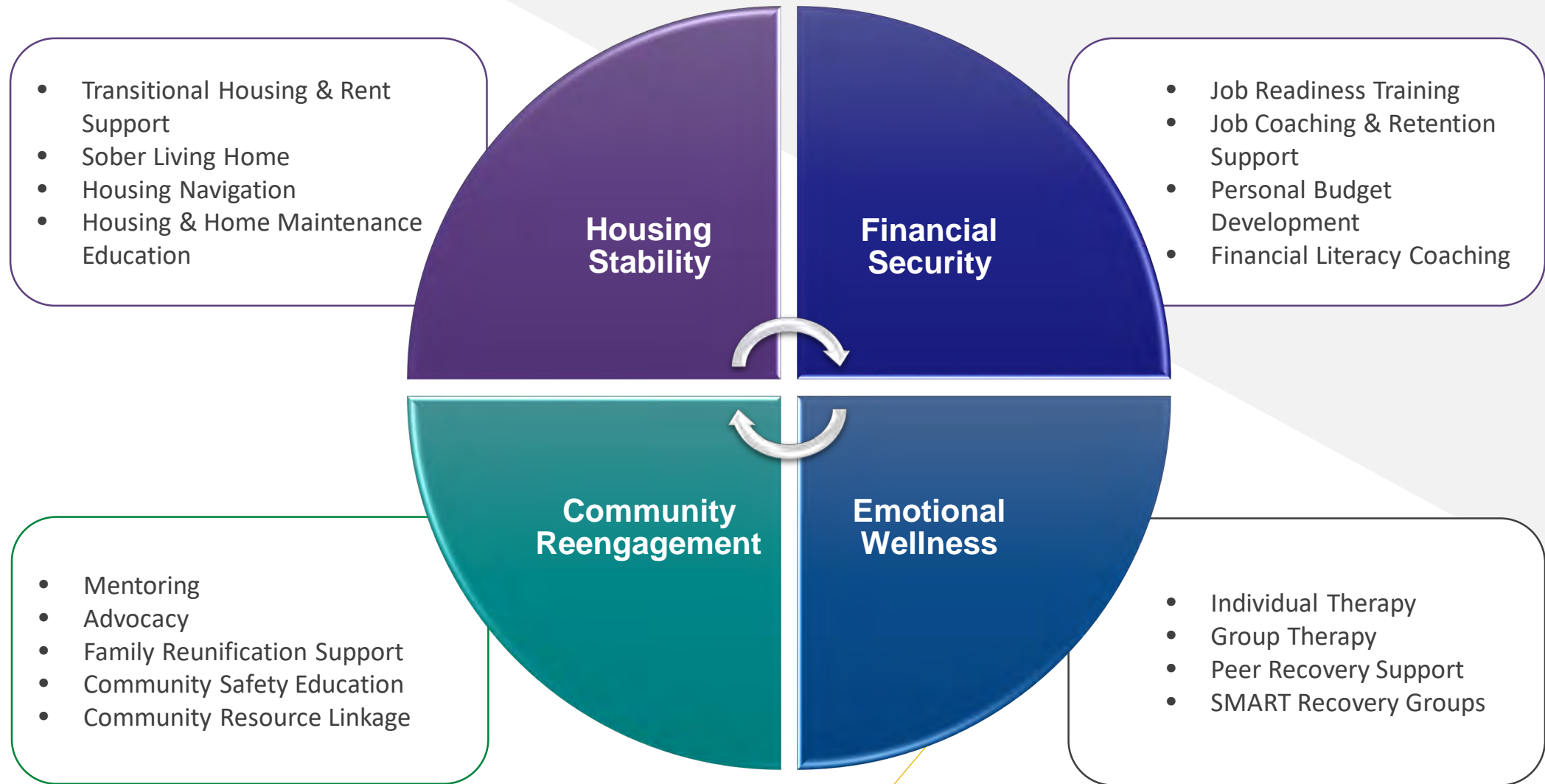
- Self-referrals
- Probation/Parole Officers
- Attorneys and Judges
- Partner Organizations



# Guiding Principals

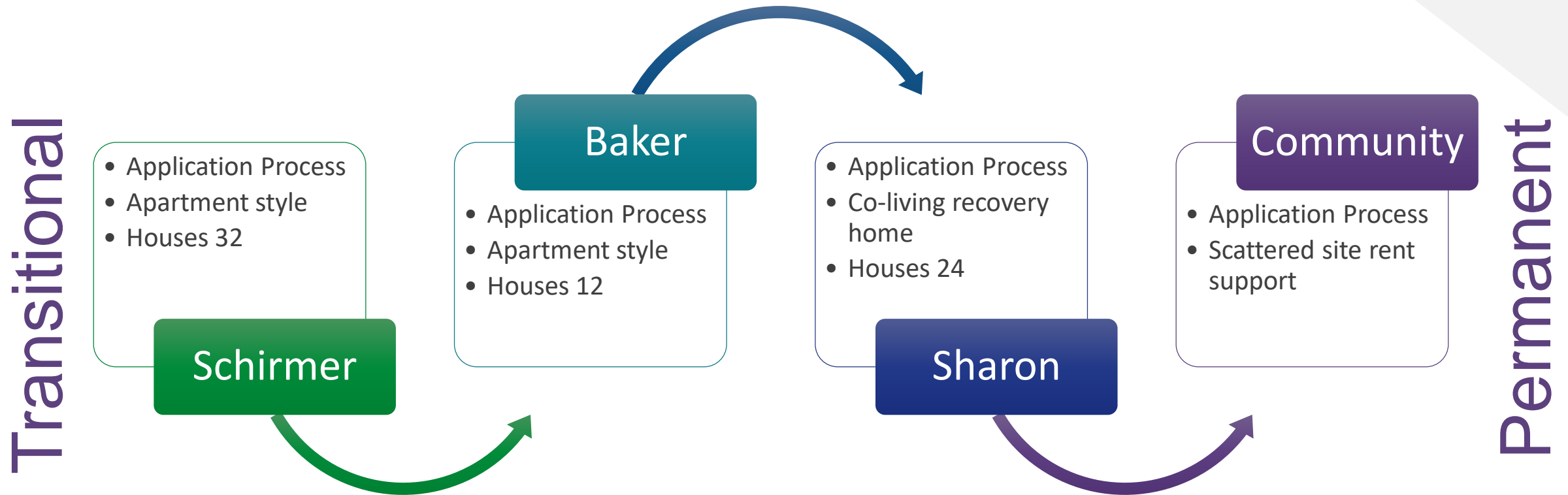


# Our Services

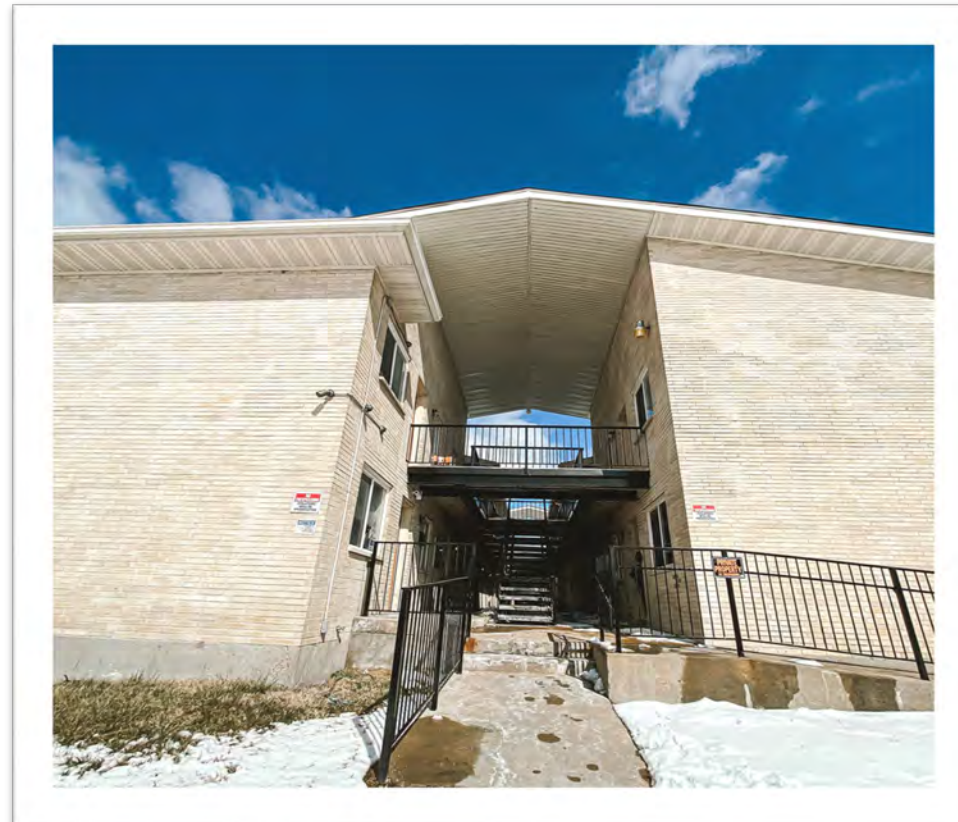


# Housing Stability

Goal: For every justice-involved woman to live in safe, affordable, and permanent housing



# Schirmer House: Transitional Home



# Schirmer House: Transitional Home

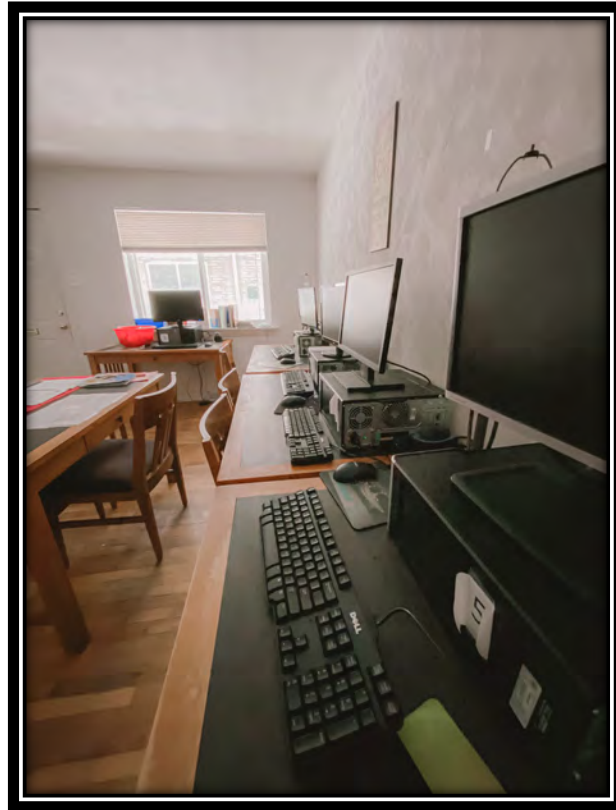




# Schirmer House: Transitional Home



# Schirmer House: Transitional Home



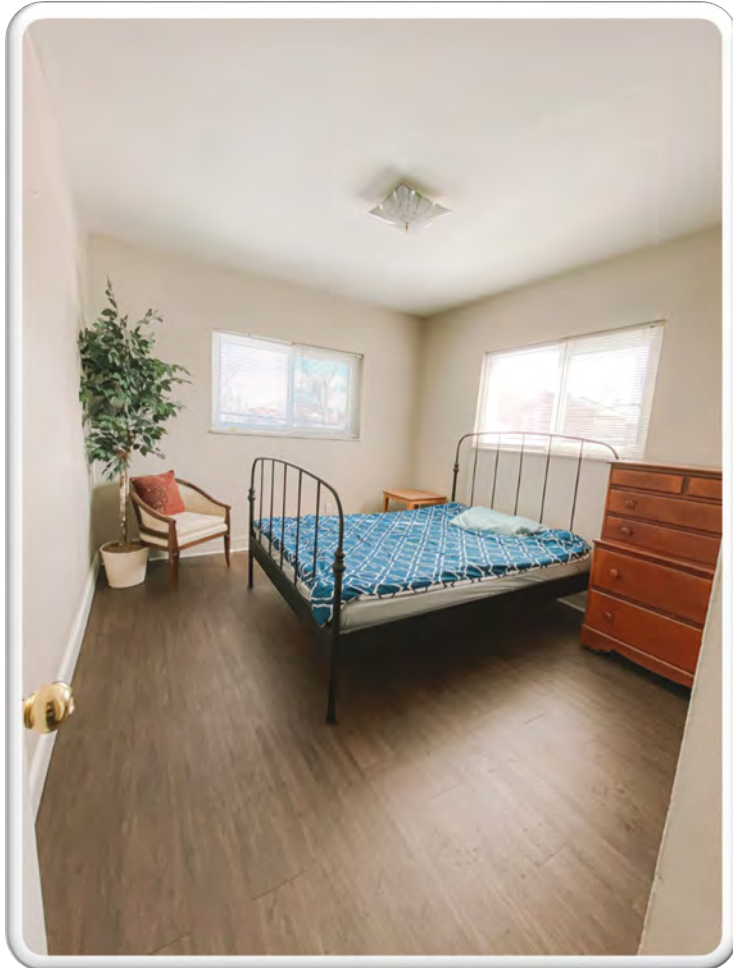
# Schirmer House: Transitional Home



# Baker House: Transitional Home



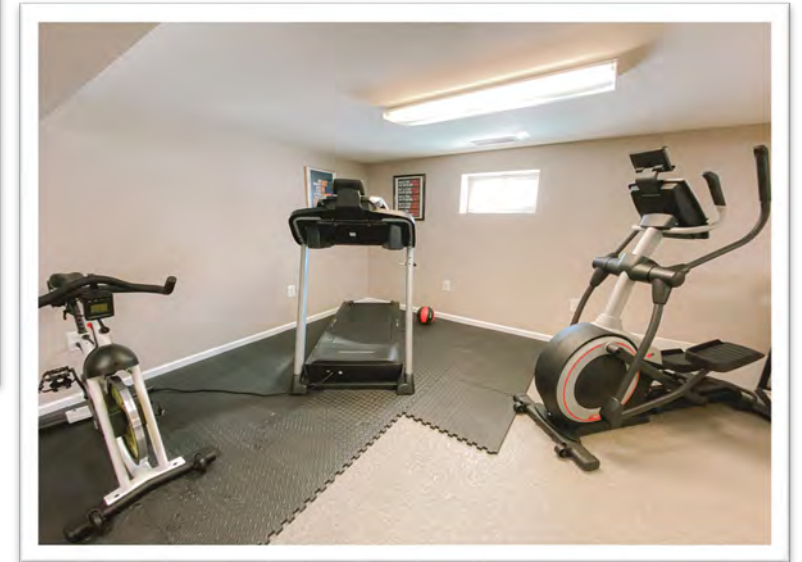
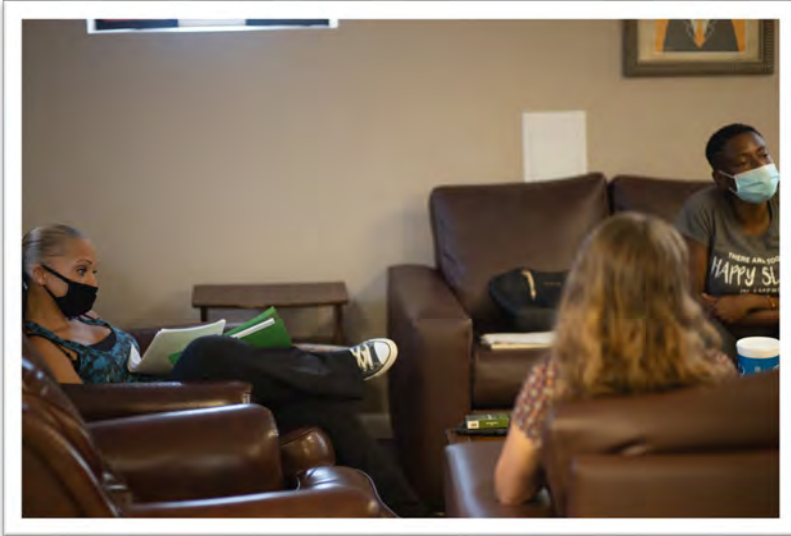
# Baker House: Transitional Home



# Baker House: Transitional Home



# Baker House: Transitional Home



# Baker House: Transitional Home

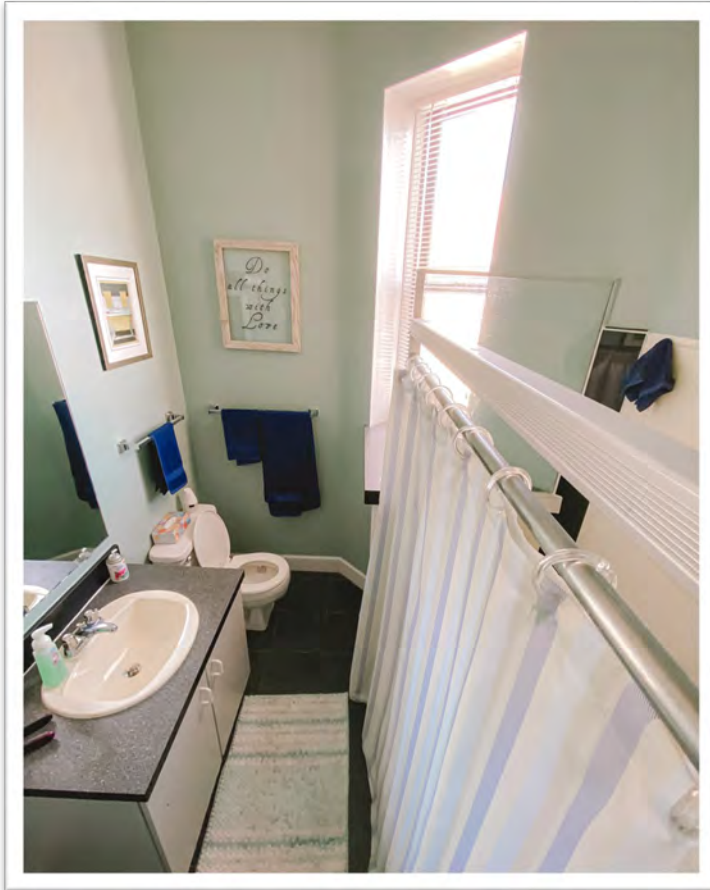




# Sharon House: Recovery Home



# Sharon House: Recovery Home



# Sharon House: Recovery Home



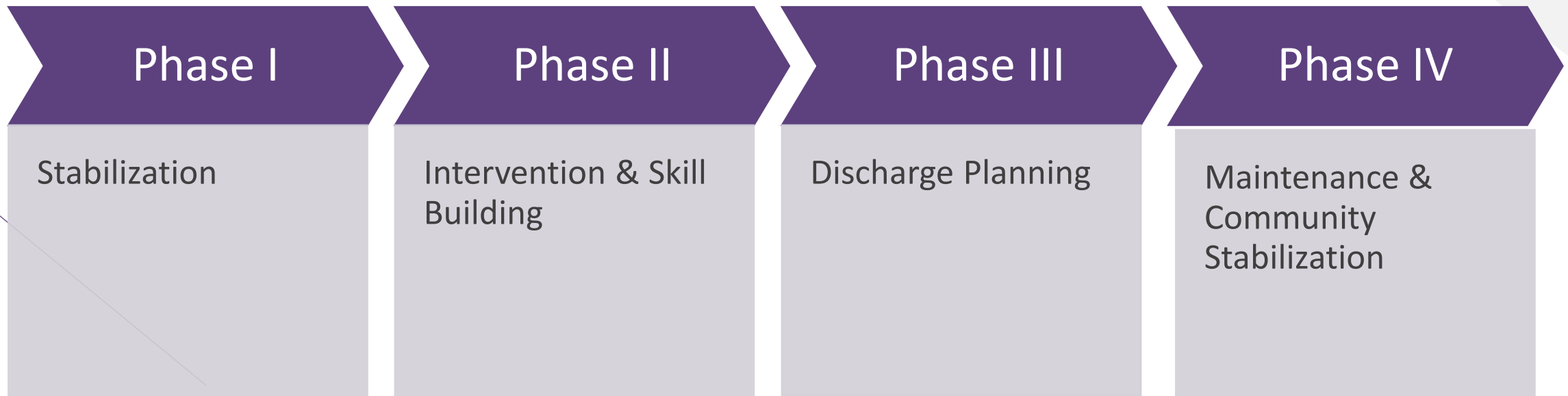
# Sharon House: Recovery Home



# Community Program: Scattered Site Housing



# Four Phased Model

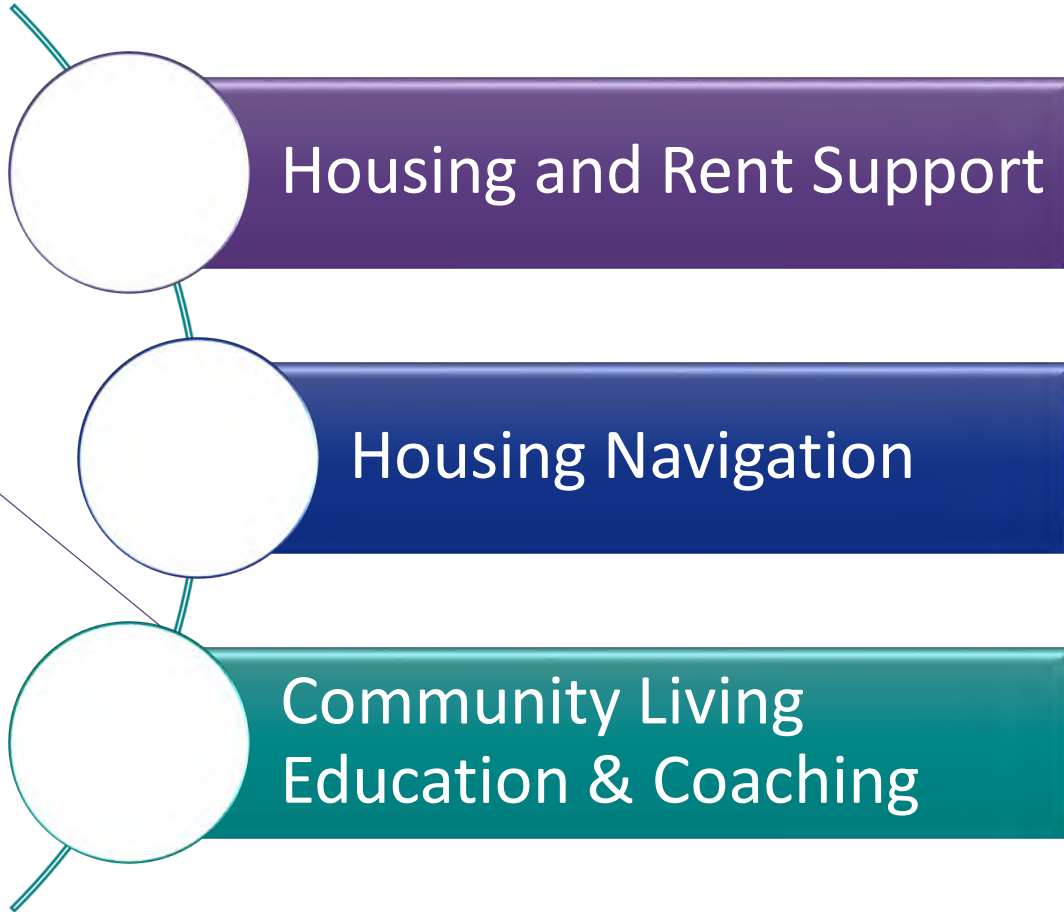


# Collaborative Case Management

- oversees the case planning process and engages the appropriate people from each partnering agency, the participant, and people in the participant's support system during the diversion and reentry process.

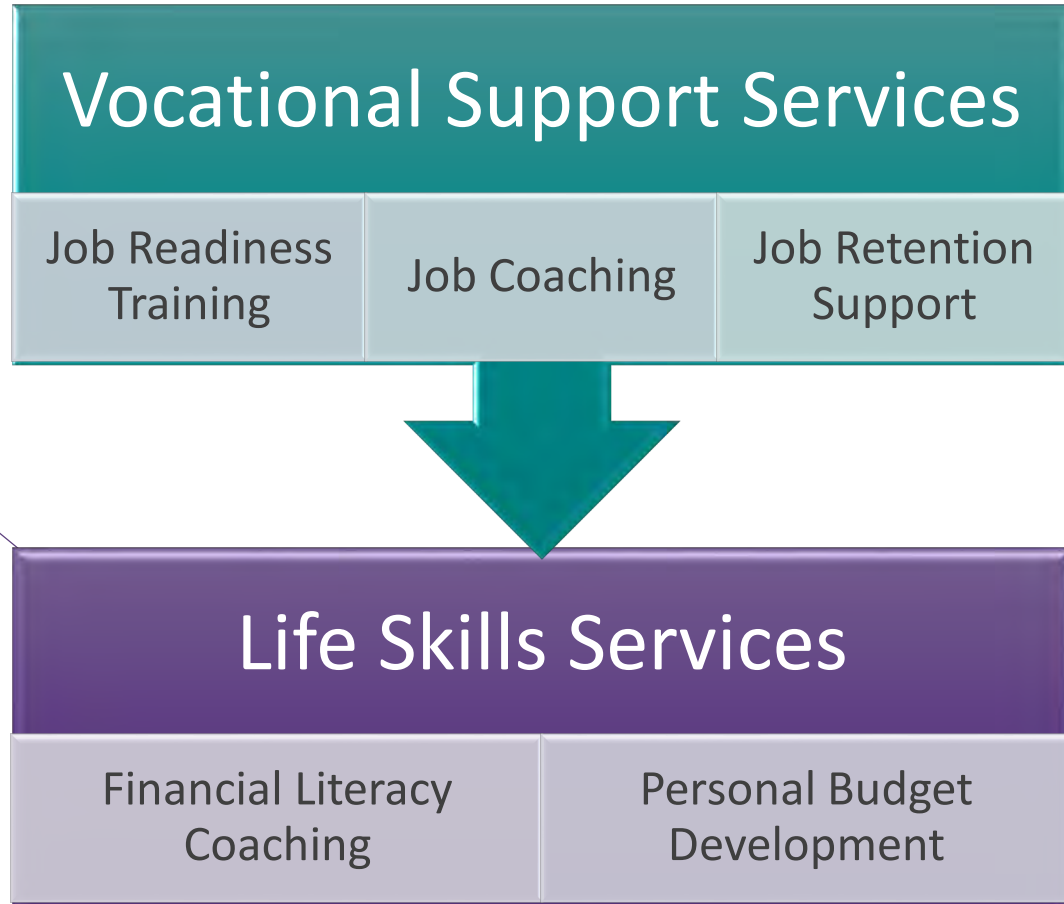


# Housing Stability Services





# Financial Security Services

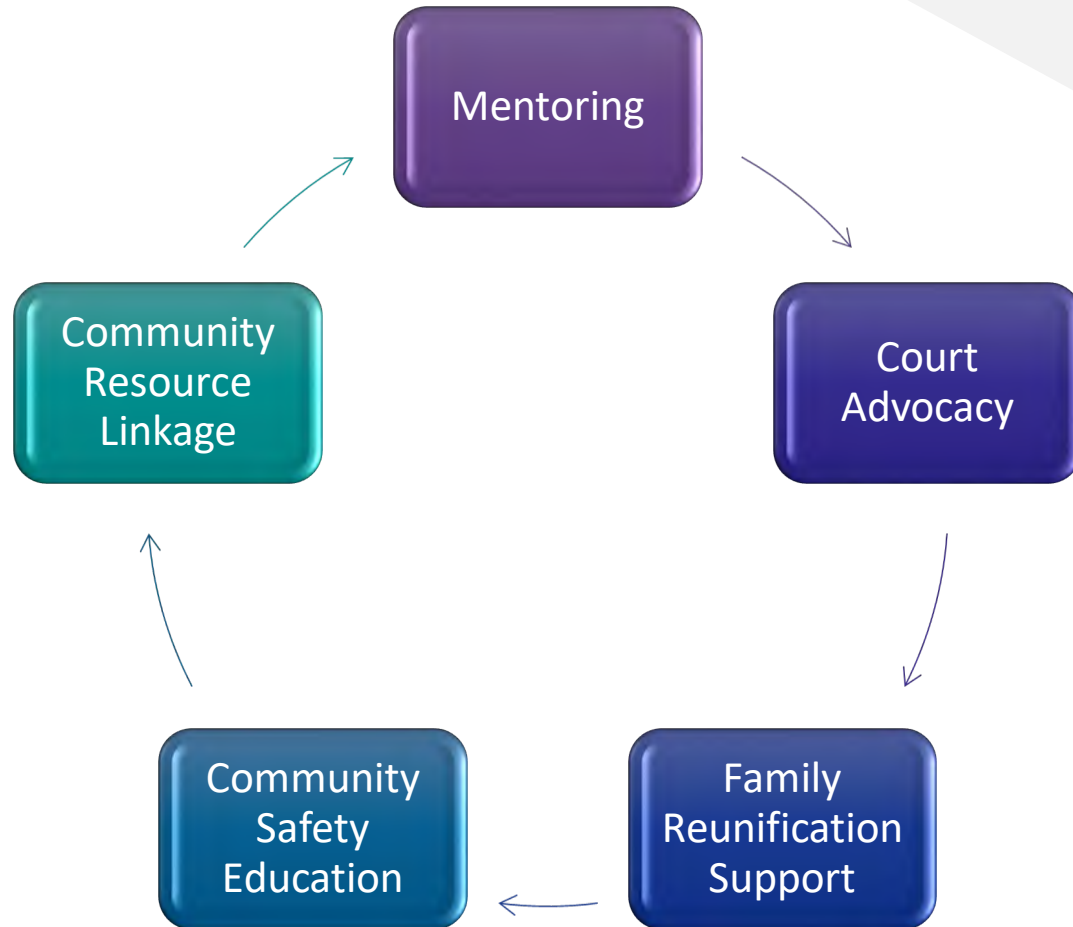


# Emotional Wellness Services



One-on-one therapy
Group therapy
Peer recovery support
SMART Recovery Groups

# Community Reengagement Services



# How to Apply for Services

## Complete an Application

- Applications can be found online at <https://www.cwitstl.org/apply.html> or can be requested by calling 314-771-5207.

## Return Application to Keyway

- Applications can be returned by email at [applications@keywaycenter.org](mailto:applications@keywaycenter.org) or by mail at 7716 S. Broadway St. Louis, MO 63111

Questions?





# Thank You.



Keyway Center for Diversion & Reentry



314.771.5207



[cwitstl@cwitstl.org](mailto:cwitstl@cwitstl.org)



[www.cwitstl.org](http://www.cwitstl.org)