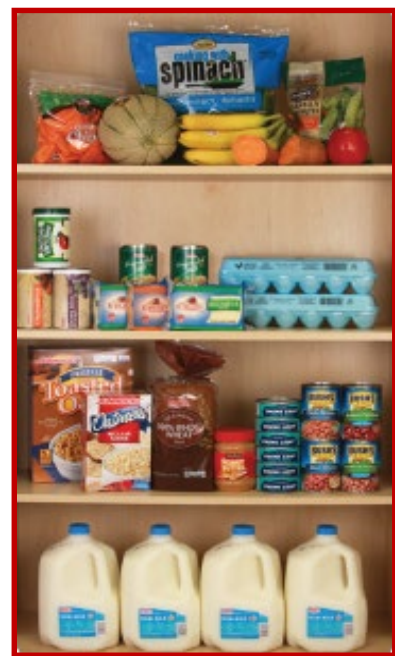




# Special Supplemental Nutrition Program for Women, Infants, and Children (WIC)



**Missouri**  
**WIC**  
**Eat Healthy. Stay Well.**



This institution is an equal opportunity provider.





- 100% federally funded by USDA, Food and Nutrition Service (FNS)
- Administered by Missouri Department of Health and Senior Services since 1974





## WIC provides



- ✓ Nutrition Education
- ✓ Nutritious/Supplemental Foods
- ✓ Health Care Referrals
- ✓ Breastfeeding Education and Support





## Eligibility

- ✓ Women
  - Pregnant
  - Breastfeeding  
(up to 12 months)
  - Postpartum  
(up to 6 months)
- ✓ Infants
- ✓ Children up to their 5<sup>th</sup> birthday
- ✓ Live in Missouri
  - Do NOT have to be a U.S. citizen
- ✓ Income below 185% of the federal poverty line

Fathers, grandparents, guardians, and foster parents may apply for benefits for the children living in their household.





## How to apply

Call or walk into a WIC local agency

## Find out more

- Visit [wic.mo.gov](http://wic.mo.gov) to
  - Complete the Online Interest Form
  - Find WIC local agencies on the locations map
- Call 1-800-TEL-LINK
- Follow @MissouriWIC on Facebook
- Call state agency at 800-392-8209
- Email state agency at [WICinfo@health.mo.gov](mailto:WICinfo@health.mo.gov)





## What is needed to apply

- ✓ Proof of Identity
- ✓ Proof of Residency
- ✓ Proof of Income



## Adjunct eligibility as proof of income

- ✓ HDFS screen showing current eligibility in or
- ✓ Letter showing current eligibility in
  - Mo HealthNet
  - TANF
  - SNAP

Mo HealthNet ID card and SNAP EBT card not acceptable as proof





## Additional information

- 30-day grace period for income documentation
- No grace period for missing proof of residency or identity

## Certification period

- Participants can be certified for a period up to 1 year
  - At 6 months a mid-certification occurs
- Re-certification occurs once a year to remain on the program

All appointments are in person





## eWIC card

- Benefits are loaded onto the eWIC card for a period up to 3 months
- Participants must be in the office to get benefits on card
- Once any benefits are removed from the card, no changes can be made to benefits that month







## Missouri WIC Facts - FFY 2021

- In federal fiscal year (FFY) 2020, WIC served 87,459 participants monthly.
- WIC services were provided at 242 sites throughout the state by 117 local agencies.
- WIC foods were available at over 600 grocery stores and pharmacies.
- The average length of time in months that participants used program benefits was 10.0 months for women and 15.8 months for infants and children.





# Missouri Breastfeeding Program - FFY 2021

- Breastfeeding Peer Counseling Program
  - 87 WIC local agencies
  - 130 Breastfeeding Peer Counselors
- Breastfeeding Friendly WIC Local Agency
  - Identifies agencies implementing evidence-based strategies for optimal breastfeeding support
  - 53 WIC local agencies designated as Breastfeeding Friendly






# eWIC Card Video



The eWIC card allows you to purchase food items when needed  
- no need to purchase everything at one time.



your household food benefits will be on one card.



The cashier will let you know when to insert your  
eWIC card and enter your four-digit PIN.





## Questions?

### Contact Information

wic.mo.gov

1-800-TEL-LINK

@MissouriWIC on Facebook

WICinfo@health.mo.gov

Anne Strobe

Administrative Coordinator

