



Missouri Department of **SOCIAL SERVICES**

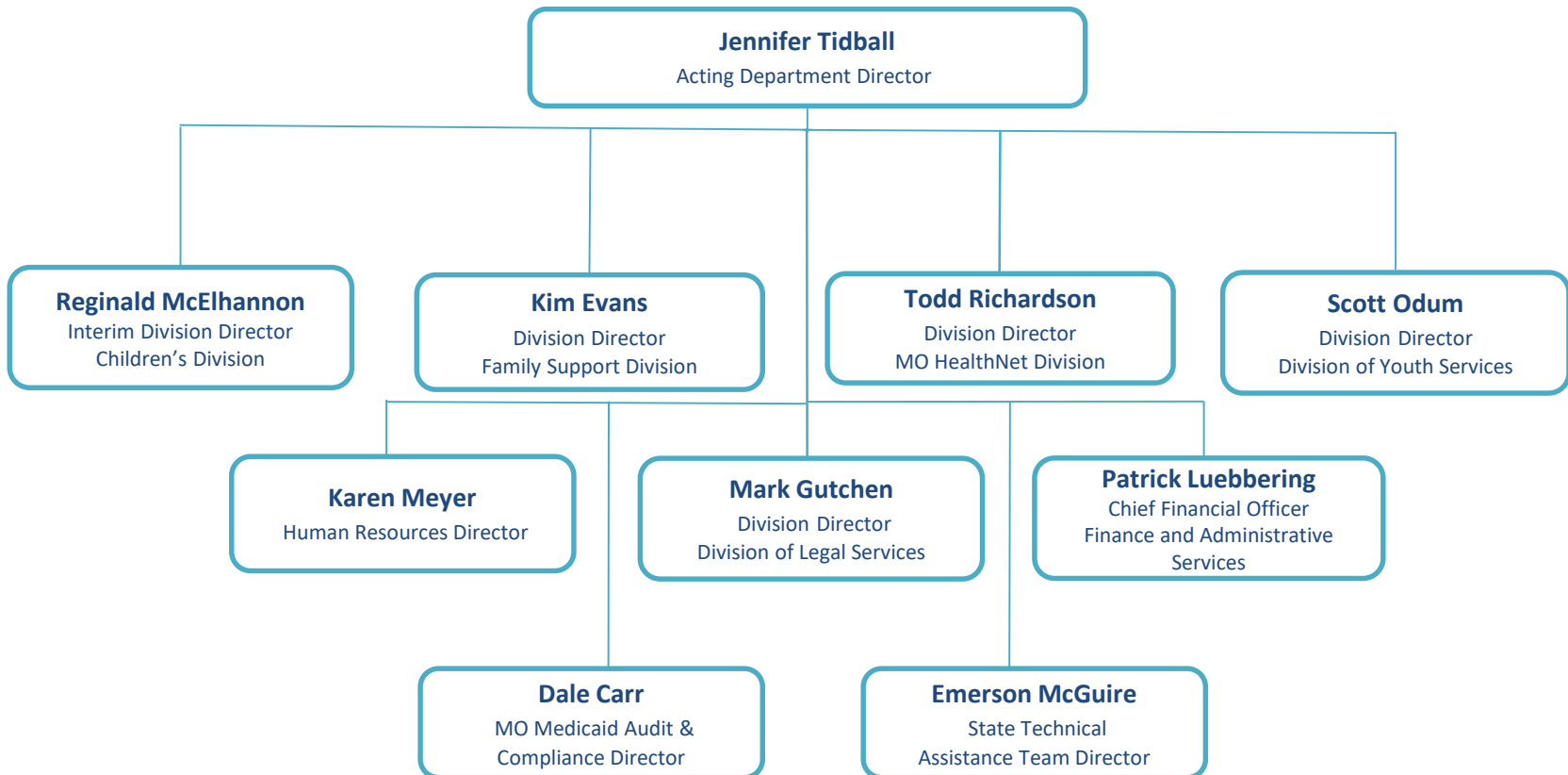
Empower Missourians to live safe, healthy, and productive lives.





About DSS

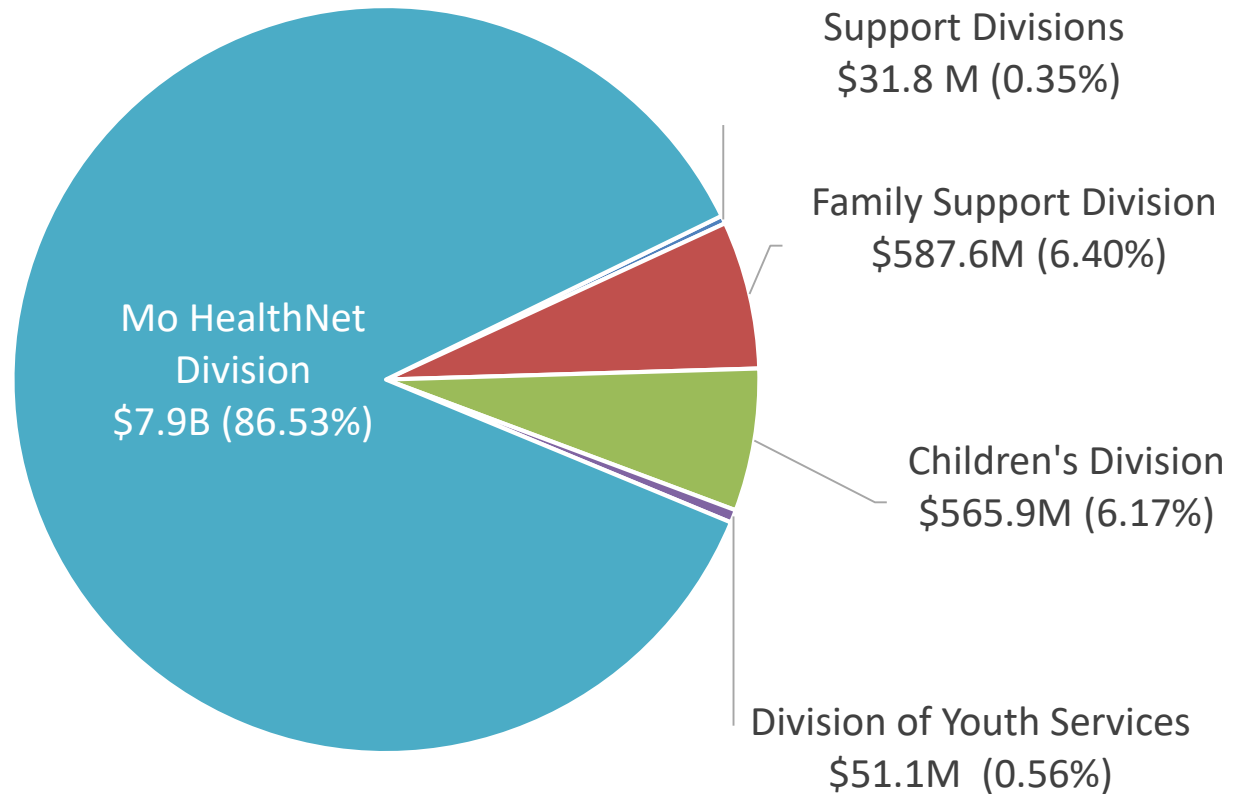
Organizational Structure





Department Expenditures

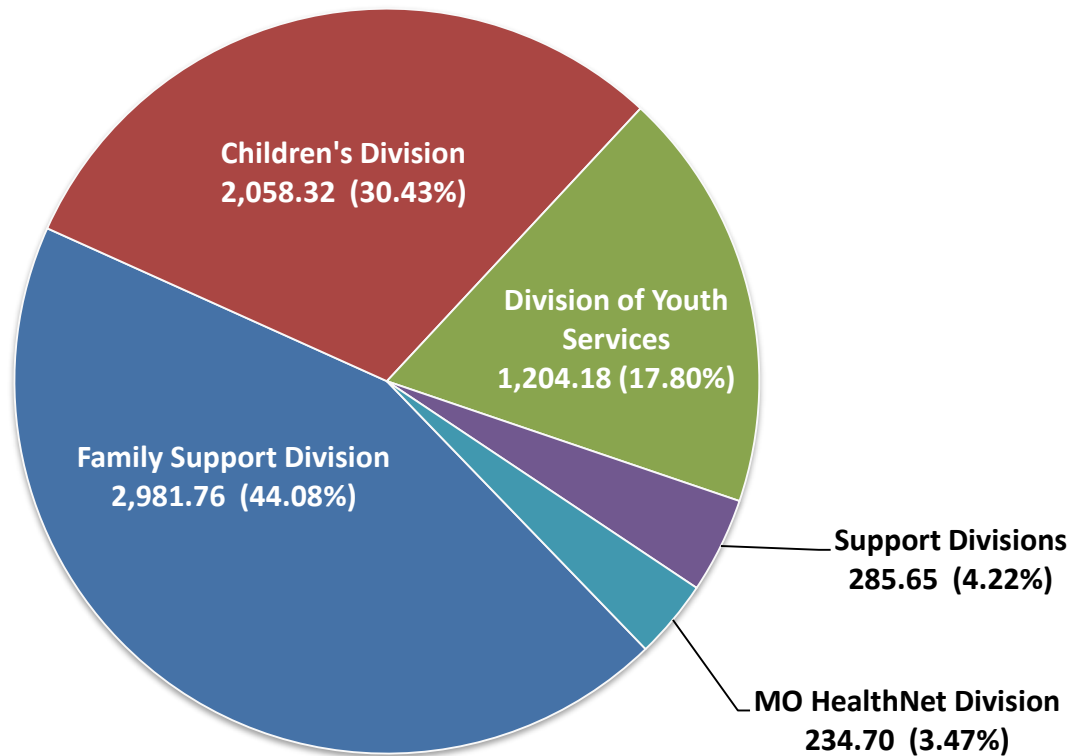
SFY 2019 Expenditures - Total Funds by Division (\$9.2B)





Budgeted Full Time Equivalents (FTE)

SFY 2019 Total FTE by Division (6,764.61)





Family Support Division (FSD)

Programs and Services

Food Stamp Program (SNAP) – Helps families purchase eligible food items from grocers through electronic benefit transfer (EBT)

- Resource limit - \$3,500 for elderly or disabled, \$2,500 for others

Monthly Income	Number of People
\$ 1,041	1
\$ 1,410	2
\$ 1,778	3
\$ 2,146	4

Child Care Subsidy – Provides financial assistance for child care services through payment of full or partial child care costs to the provider on behalf of eligible families

- Family income – Full Benefit up to 138% FPL
- Transitional benefit – Up to 165% for a 75% benefit, up to 190% for a 50% benefit and up to 215% FPL for a 25% benefit



Family Support Division (FSD)

Programs and Services

Temporary Assistance for Needy Families (TANF) – Provides cash and other assistance for basic family needs

- Cash Assistance Resource limit - \$1,000

Monthly Income	Number of People
\$136	1
\$234	2
\$292	3
\$342	4

Work Assistance – Training, work experience, job preparation, and other wrap-around services to assist cash benefit recipients in becoming job ready

Child Support – Provides assistance to custodial and noncustodial parents

Rehabilitation Services for the Blind – Provides assistance to blind or visually impaired individuals



Family Support Division (FSD)

Programs and Services

Program	FY19 Avg. Monthly Participants	FY19 Avg. Monthly Cases	Total Dollars
TANF Cash Assistance	24,824	10,597	\$26,808,211
SNAP	704,127	328,963	\$1,009,800,131
Child Care Participants	32,791	N/A	\$137,874,564
Child Support Cases	N/A	314,942	N/A



Family Support Division (FSD)

Programs and Services

Medicaid – Healthcare coverage for needy Missourians

Medicaid Program	Federal Poverty Limit
MO HealthNet for Kids - Under age 1	185%
MO HealthNet for Kids - Ages 1-18	133%
State Children's Health Insurance Program – Non-Premium	150%
State Children's Health Insurance Program – Premium	151% - 300%
MO HealthNet for Pregnant Women	185%
MO HealthNet for Aged & Disabled	85%
MO HealthNet for Adult Parents (family of 3)	\$301/mo.



MO HealthNet Division (MHD)

Programs and Services

MHD administers health care benefits for low-income Missourians for the following programs and services:

- **Pharmacy** - Includes outpatient prescription drugs.
- **Physician-Related** - Includes physicians, podiatrists, chiropractors, advanced practitioners, and behavioral health practitioners.
- **Dental** - Includes diagnostic, preventative, and corrective dental services for children, pregnant women, the blind, and nursing facility residents. All other adults receive a more limited services covering preventative and trauma related dental services.
- **Nursing Facilities** - Includes long term care and rehabilitative services within nursing facilities.
- **Home Health** - Includes medically-oriented treatment or intermittent supervision for individuals with an acute illness which can therapeutically be managed at home.



MO HealthNet Division (MHD)

Programs and Services

MHD administers health care benefits for low-income Missourians for the following programs and services (continued):

- **Rehabilitation & Specialty** - Includes audiology, optical, durable medical equipment, ambulance, therapy, hospice, comprehensive day treatment, and children's residential treatment.
- **Hospital Services** - Includes inpatient, outpatient, and emergency room hospital services.
- **Health Homes** - Includes clinical care management for individuals with chronic conditions.
- **Managed Care** - Includes health care services and care management for eligible children, pregnant women, and custodial adults provided by a Health Maintenance Organization (HMO) style managed care program.



MO HealthNet Division (MHD)

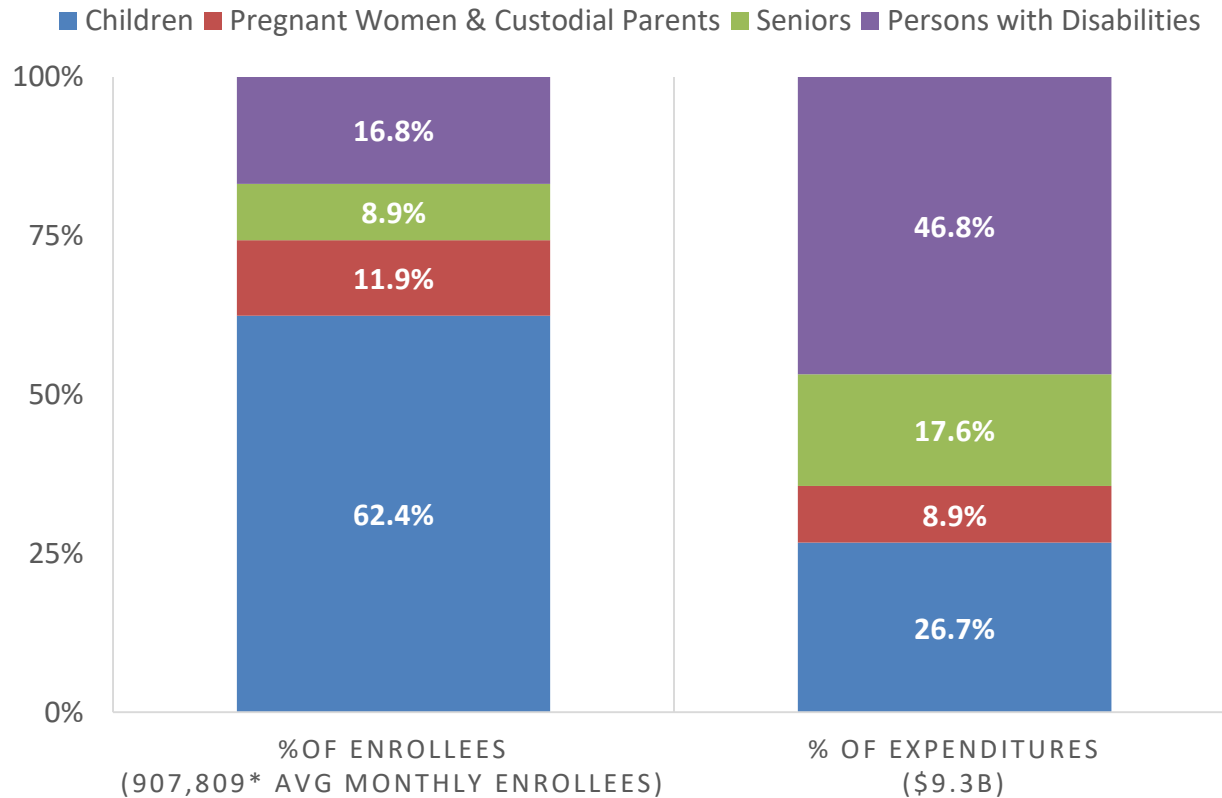
Medicaid Enrollees & Expenditures

In SFY19, 26% of MO HealthNet enrollees were seniors and people with disabilities; however, they accounted for 64% of MO HealthNet expenditures.

SFY19 Monthly Avg. Enrollees

Persons with disabilities	152,428
Seniors	80,738
Pregnant Women & Custodial Parents	108,431
Children	566,212
Total	907,809

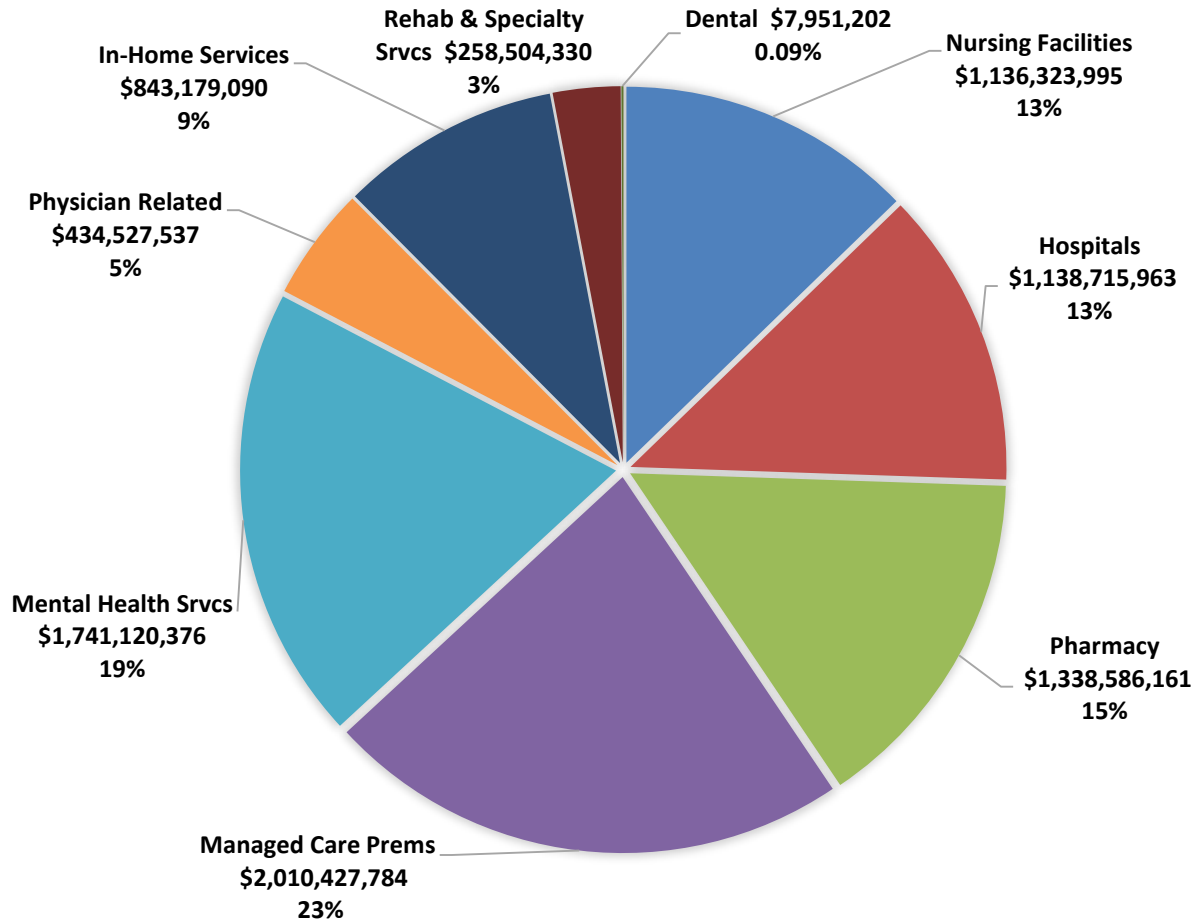
MO HEALTHNET SFY 2019





MO HealthNet Division (MHD)

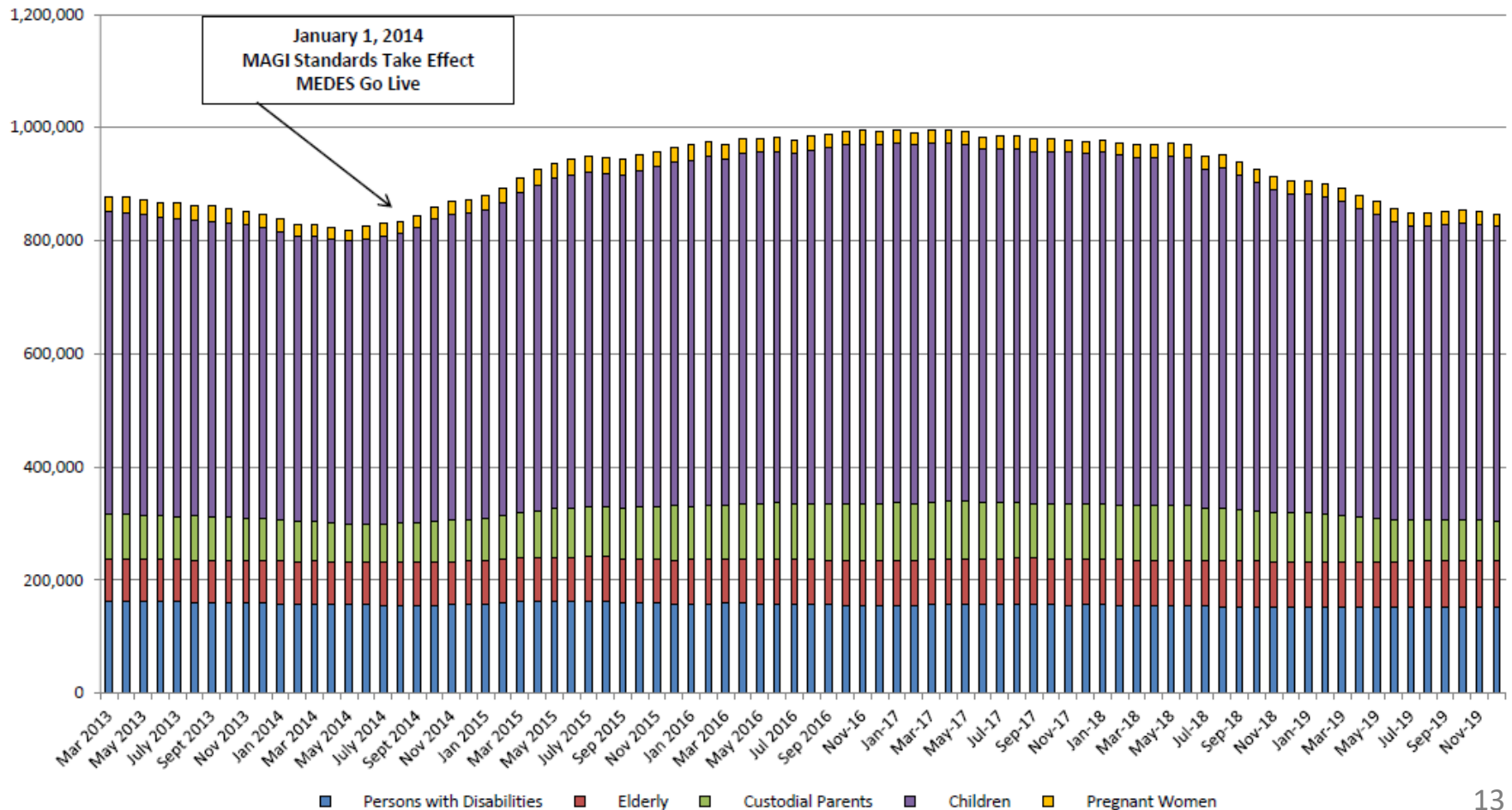
FY19 Medicaid Expenditures by Service





MO HealthNet Division (MHD)

Medicaid Caseload 2013 - 2019





Children's Division (CD)

Programs and Services

FY19 Program and Caseload Information

Child Abuse & Neglect (CA/N) Hotline calls received (answered 24/7)	153,155
CA/N or referral from hotline calls received	88,032
- Investigations	23,555
- Family Assessments	47,306
- Referrals	17,171
Family-Centered Services	2,145
Foster Care (6/30/19)	13,693
Adoption (6/30/19)	16,073
Guardianship (6/30/19)	6,362



Division of Youth Services (DYS)

Programs and Services

DYS provides rehabilitative services and education to youthful offenders committed to the Division from the 46 judicial circuits in Missouri.

Treatment Services

DYS operates 29 residential facilities (secure, moderate and community based levels of care) and provides transitional aftercare services, including eight non-residential day treatment centers

- 1,216 youth were served in residential facilities during FY 2019
- 450 youth were served in day treatment during FY 2019

Education

DYS provides a Department of Elementary and Secondary Education (DESE) approved program that allows youth to earn high school credits toward a traditional diploma or pursue a high school equivalency diploma (HiSet)

Juvenile Court Diversion

DYS operates a Juvenile Court Diversion as a grant-in-aid program in order to provide local juvenile courts with resources to create specific services or solutions for problems unique to their communities

- 8,948 court referred youth diverted from DHS care during FY 2019



Contact Us

Frequently Requested Contact Information

Report Child Abuse and Neglect

1-800-392-3738

Report Fraud

1-877-770-8055

DLS.ReportFraud@dss.mo.gov